

INTRODUCING THE WORLD'S FIRST ELECTRIC VERTICAL ROBOT

ELEVATE YOUR OPERATIONS WITH ELTO. THE WORLD'S FIRST ELECTRIC VERTICAL ROBOT.

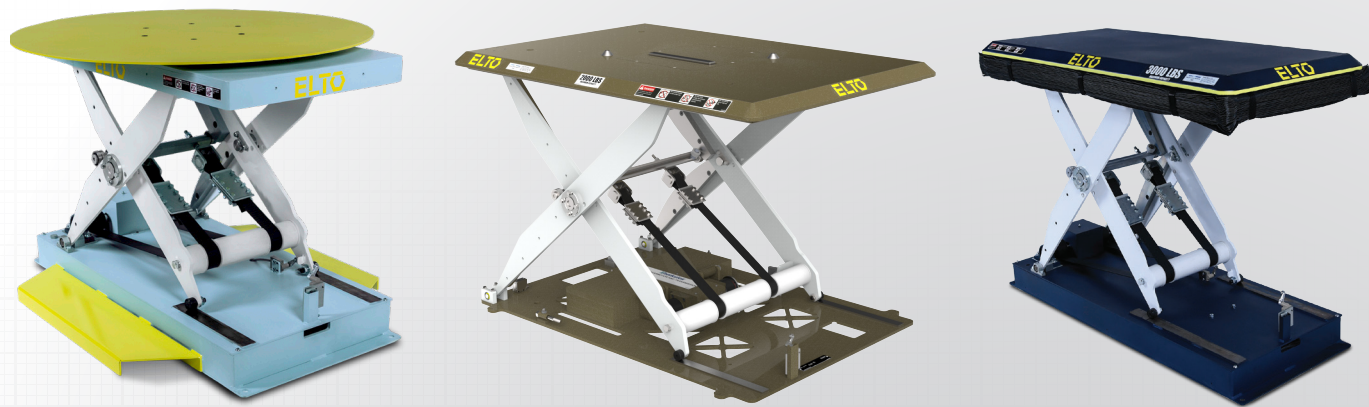


ELTO
eLIFT BY ENKON

HIGHER THINKING

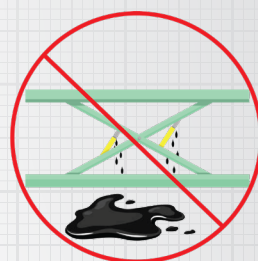
(800) 444-4351
www.enkon.pro
www.herkules.us

INTRODUCING THE 100% ELECTRIC-POWERED, BELT-DRIVEN LIFT TABLE



ELTO is the industry's first electric scissor lift table powered by a breakthrough, patented, 100% all-electric gearmotor transmission that uses no hydraulic pumps, no oil and no fluid.

Make the switch to the cleaner, safer electric vertical robot!



Say Goodbye to These Hydraulic Lift Hazards:

- Dangerous slip and fall injuries
- Leaky cylinders
- Hydraulic oil spills
- Costly repairs
- Drifting positions



Reap the Rewards of a Fully Electric Scissor Lift Table

- Eliminate slip and fall hazards
- Ultra-low maintenance
- Unmatched precision and torque
- Consistent, non-fading performance over high duty cycles
- Highly resistant to work-site contamination

THE ELECTRIC VERTICAL ROBOT THAT FITS NICELY INTO YOUR CURRENT OPERATIONS

ELTO's design and patented technology delivers the same form, fit and function of traditional scissor lifts and is designed to step right into the most common lift table applications.

ELTO replaces old, leaky hydraulic lifts for most common scissor lift table applications.



Pallet Positioning

Achieve and maintain ideal operator ergonomics to reduce operator fatigue and the risk of injuries.

Conveyor Applications

Operations with conveyor belts requiring a level change are ideal for ELTO, which can be equipped with a wide range of roller tops to support this type of use.

Industry Ready

ELTO outperforms outdated hydraulic lifts in virtually every industrial sector. Its patented, fully electric-powered gearmotor transmission and low-profile design make it ideal for applications in manufacturing, agriculture, packaging, fulfillment, distribution, military and more.



ELTO FEATURES THE MOST ADVANCED LIFT TECHNOLOGY IN THE INDUSTRY TODAY



FEATURES & SPECS

PRODUCT TYPE	Electric Scissor Lift Table
ACTUATOR	Gear Motor Transmission
CAPACITY	Up to 3000 lbs.
RAISED HEIGHT	Up to 47"
BEARINGS	Lubricated for Life
PIVOTS	Replaceable Hub
WHEEL TRACKS	Hardened
MAINTENANCE STOPS	2 Quantity
POWER	220 VAC 3-Phase
SAFETY	Bellows Skirting
FLOOR MOUNT TABS	¾" Holes, 4 Quantity
LIMIT SWITCHES	Upper / Lower
PENDANT PUSH BUTTON	Up / Down / E-stop
FOOT CONTROLLER	Up / Down
COUNTRY OF ORIGIN	USA

100% Electric Powered

ELTO is powered by a patented, all-electric gearmotor transmission and features a low-profile design for enhanced installation, operation and accessibility.

Long-Standing Static Positioning

ELTO's belt-driven design helps the scissor lift table hold a fixed position indefinitely, without fading or drifting.

Belt Driven

Each of the two high-strength, steel-reinforced belts are rated for the electric vertical robot's maximum load capacity, for redundancy and maximum safety. They are extremely low maintenance compared to unreliable hydraulic alternatives.

Scissor Bearings

ELTO's heavy-duty construction utilizes robust bearing joints, which are more precise, quieter and longer lasting than the bushings typically used in hydraulic scissor lift tables.

Low Noise

ELTO meets OSHA standards for low-level decibel operation, for workplace safety.

Ultra-Low Maintenance

Compared to the old technology of hydraulic lifts, which are prone to leaking, expensive repairs and an unreliable lifespan, ELTO's patented gearmotor transmission uses no oil, no fluid and requires very little maintenance.

Built to Last

High-strength, welded steel construction is built for the rigorous demands of heavy industrial use.

Limit Switches

For upper and lower travel limits.



FLAT BELTS ARE A REVOLUTIONARY SCISSOR LIFT TABLE INNOVATION

READY-TO-SHIP SYSTEMS. BUILT TO LAST.

When you need to address a new process requirement right now, EnKon by Herkules has the solution. Our off-the-shelf modular systems – designed and built right here in the USA – enable customers to save time and money on a standard system that will provide years of productive service.

This modular approach also enables users to add new, bolt-on features and functionality as their needs change.

Advantages Over Hydraulics

- **Precision Controlled**
Belt-driven design offers high precision cycle after cycle
- **Static Positioning**
Holds position, fully loaded, indefinitely without fading or drifting
- **Dynamic Loading**
Effectively dissipates load-impact force with no compromise to position accuracy
- **Long, Durable Lifespan**
Virtually indestructible, with no stretching, breaking down or loss of performance accuracy over time
- **Ultra-Low Maintenance**
No fluid or oil required
- **Clean & Green**
Low-power consuming, with no leaks, spills or worksite contaminations



Steel-reinforced flat belts have been proving their superior performance in critical industry applications for decades. As a leader in the custom-built scissor lift industry, EnKon has been installing electric-powered, belt-driven scissor lifts that perform to extreme specifications in high-production manufacturing plants for more than 20 years.

Now, we've applied our patented, dual-belt design to our latest innovation. The ELTO vertical robot scissor lift table performs cleaner, and with more precision in higher stress and heavier duty cycles, than hydraulic-powered lifts ever could.

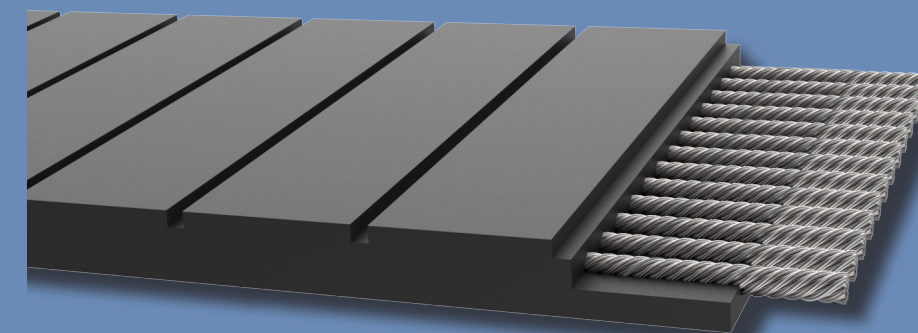


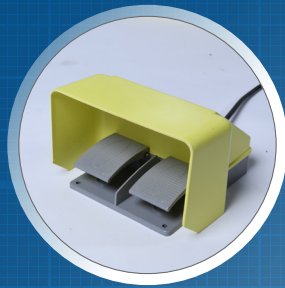
Maximum Safety

- Dual-belt design for redundancy and safety
- Each belt is rated to the full load capacity of the scissor lift table
- Unlike hydraulic scissor lift tables, ELTO will maintain position and the load will not drop even in the unlikely event of a belt failure

Robust Construction

- Temperature resistant between -30°C and +80°C
- Rugged polyurethane belt material
- Aerospace-grade high-strength steel cable reinforcement
- Steel cables are specially wound, tuned and balanced for flat belt use





**ELTO Standard
Foot Controller**



**ELTO Standard
Hand Pendant**



MODEL	TRAVEL (IN)	CAPACITY (LBS)	LOWERED HEIGHT (IN)	RAISED HEIGHT (IN)	PLATFORM SIZE		SHIP WEIGHT (LBS)
					WIDTH (IN)	LENGTH (IN)	
VRE03-05-36-2448	24	500	11.7	35.7	Ø 44	49.5	1000
VRE03-10-36-2448	24	1000	11.7	35.7	Ø 44	49.5	1050
VRE03-20-36-2448	24	2000	11.7	35.7	Ø 44	49.5	1100
VRE03-30-36-2448	24	3000	11.7	35.7	Ø 44	49.5	1150



MODEL	TRAVEL (IN)	CAPACITY (LBS)	LOWERED HEIGHT (IN)	RAISED HEIGHT (IN)	PLATFORM SIZE		SHIP WEIGHT (LBS)
					WIDTH (IN))	LENGTH (IN)	
VRE15-05-43-4061	36	500	7	43	39.5	61	1200
VRE15-10-43-4061	36	1000	7	43	39.5	61	1250
VRE15-20-43-4061	36	2000	7	43	39.5	61	1300
VRE15-30-43-4061	36	3000	7	43	39.5	61	1350



MODEL	TRAVEL (IN)	CAPACITY (LBS)	LOWERED HEIGHT (IN)	RAISED HEIGHT (IN)	PLATFORM SIZE		SHIP WEIGHT (LBS)
					WIDTH (IN)	LENGTH (IN)	
VRE06-05-47-2456	36	500	10.5	46.5	24	56	1000
VRE06-10-47-2456	36	1000	10.5	46.5	24	56	1050
VRE06-20-47-2456	36	2000	10.5	46.5	24	56	1100
VRE06-30-47-2456	36	3000	10.5	46.5	24	56	1150

ELEVATE YOUR OPERATIONS WITH ELTO. THE WORLD'S FIRST ELECTRIC VERTICAL ROBOT.

ELTO[™]
eLIFT BY ENKON



HERKULES EQUIPMENT CORPORATION

2760 Ridgeway Court
Walled Lake, MI 48390
www.herkules.us
www.enkon.pro
(800) 444-4351

